



# ***Doing our bit to help protect our local waterways and the Great Barrier Reef***

**Chris Manning**

**Townsville City Council**



# So why these new arrangements?

*Prevention better than cure... and cheaper!*



# Creek to Coral partnership



## Townsville City Council initiative (with DERM)

- » Protecting our local freshwater and downstream marine environment from the effects of land based activities... using a Total Water Cycle Management approach:
  - Achievable local government actions:
    - Infrastructure based approach
    - Improved urban planning and regulatory mechanisms
  - Involving the community:
    - Supporting community based education and involvement
- » Integration of waterway management activities across Council, Government, Industry and our community
- » Manage catchment management and water quality improvement projects



# Black Ross WQIP

## *Characteristics of the WQIP region*

**Total area** ~ 2700km<sup>2</sup>

- Urban ~8%
- Nature cons / min use ~37%
- Grazing ~49%
- *or Peri-urban ~ 30%*

### Population

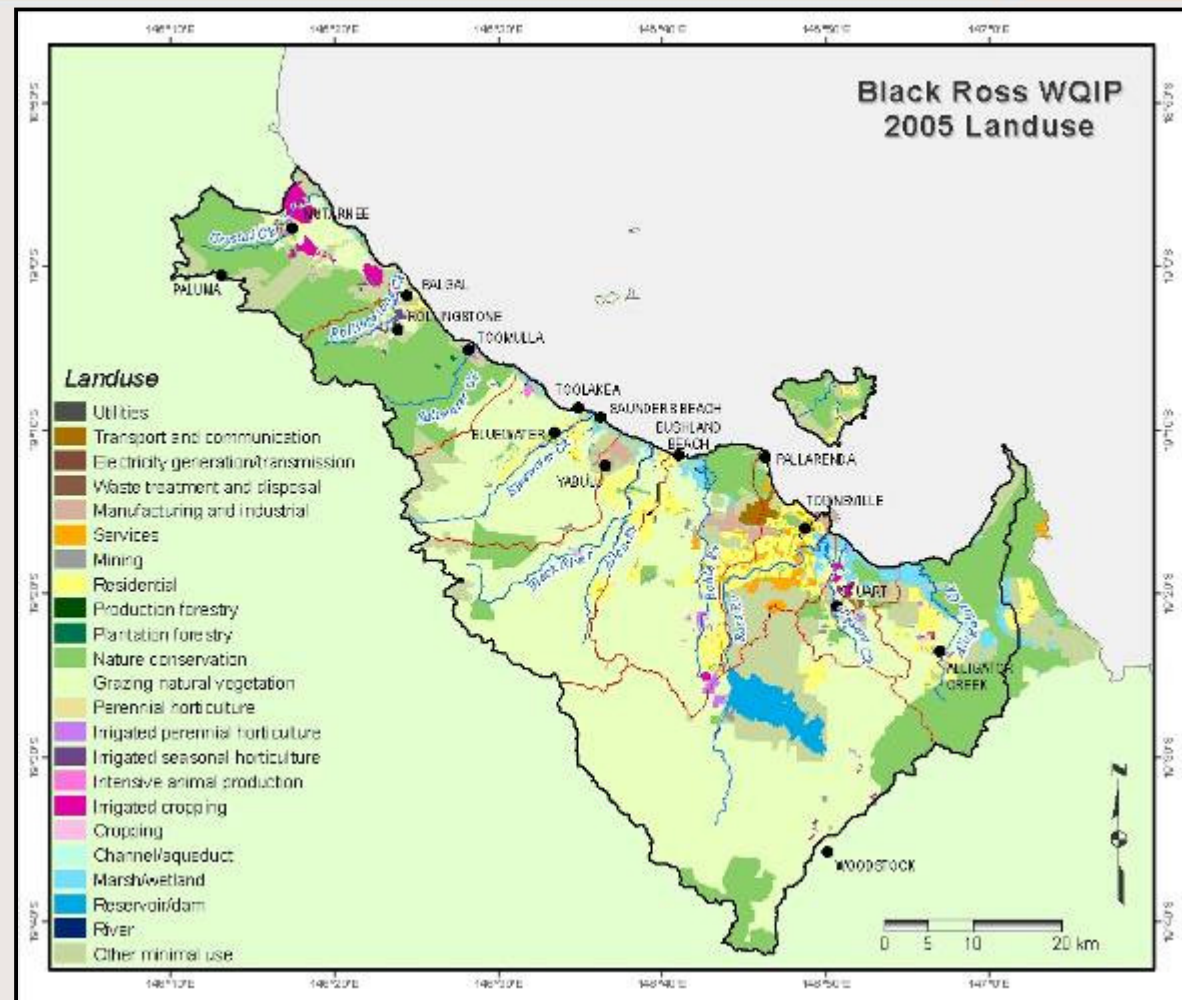
~ 160 000 (2005)

~ 175 000 (2009)

### Rainfall

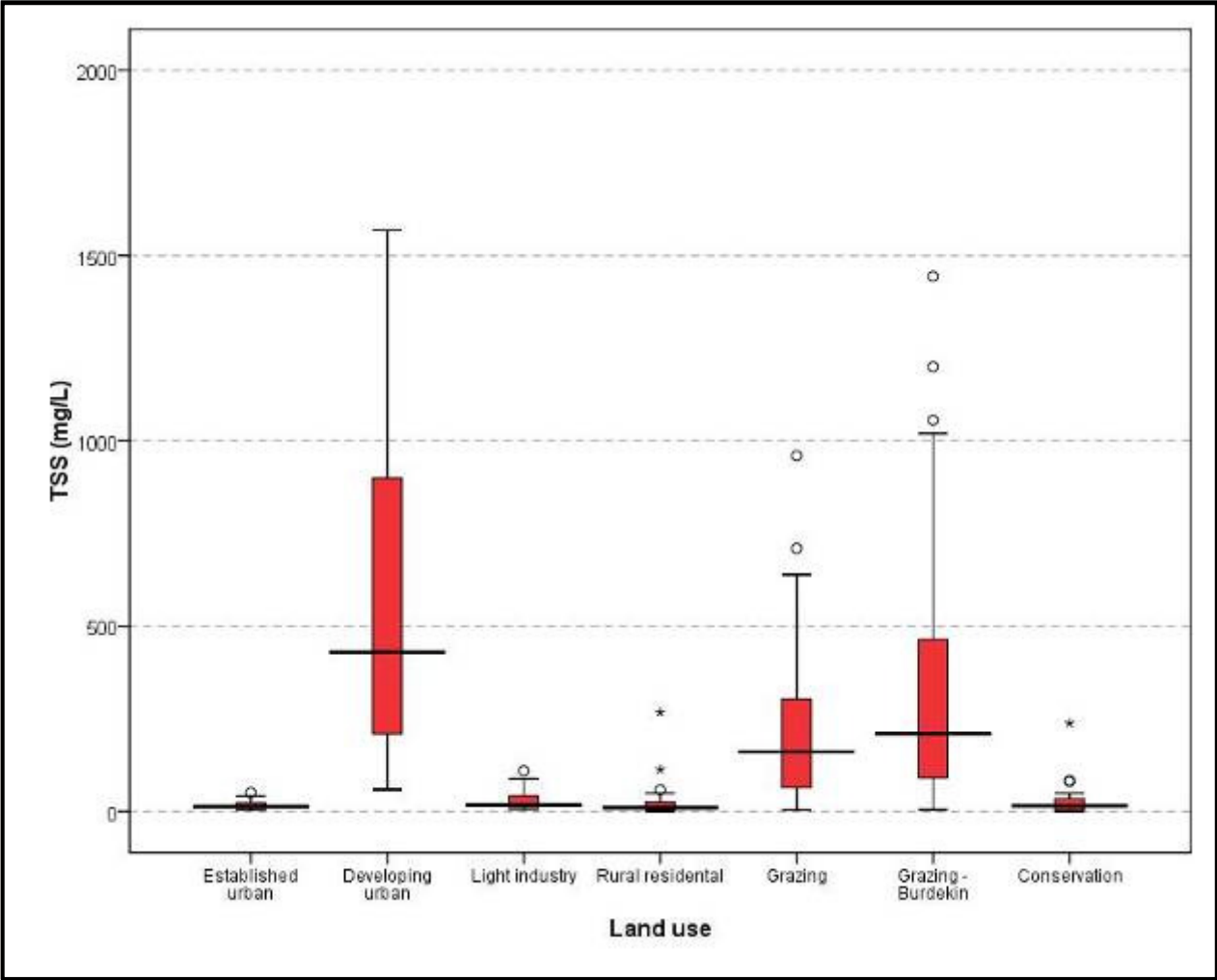
• Av ~1143mm/yr (91 days)

• > 2000mm/yr at Paluma



# Event based water quality results

Source: 2006/07 and 2007/08 data (ACTFR)



# Issues, pressures and threats

## *Priority pollutants by land use*

### **Diffuse sources**

- » All developing landuses (e.g. construction phase)
  - total suspended sediment (TSS) and particulate nutrients
- » Developed landuses (e.g. mature urban areas)
  - inorganic, organic nutrients, TSS and rubbish (and low DO)
  - pesticides, metals and hydrocarbons (some localised issues)
- » Peri-urban
  - diffuse inorganic nutrients (nitrogen)
- » Grazing
  - TSS and particulate nutrients

### **Point sources**

- » Wastewater treatment plants
  - inorganic nutrients



# Issues, pressures and threats

## *Population increase*

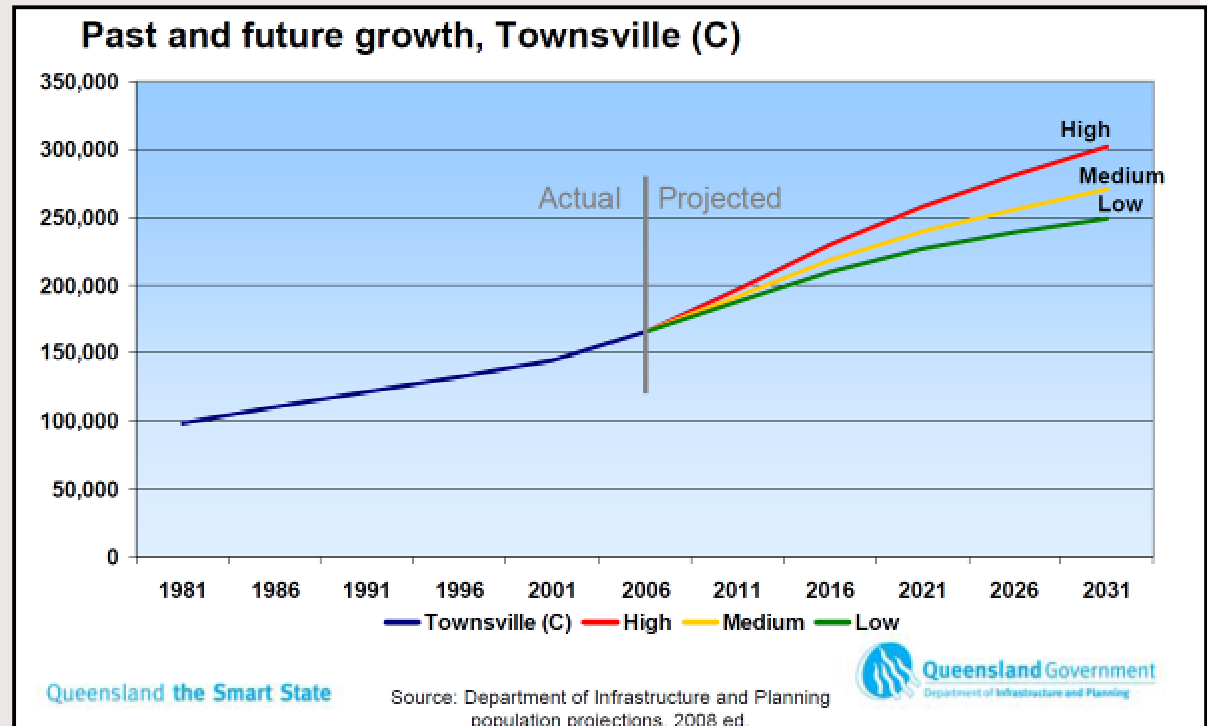
### Townsville population

Actual (2005) ~160 000ppl

Actual (2009) ~175 000ppl

Projected (2021) ~237 000ppl

Projected (2045) ~312 000ppl

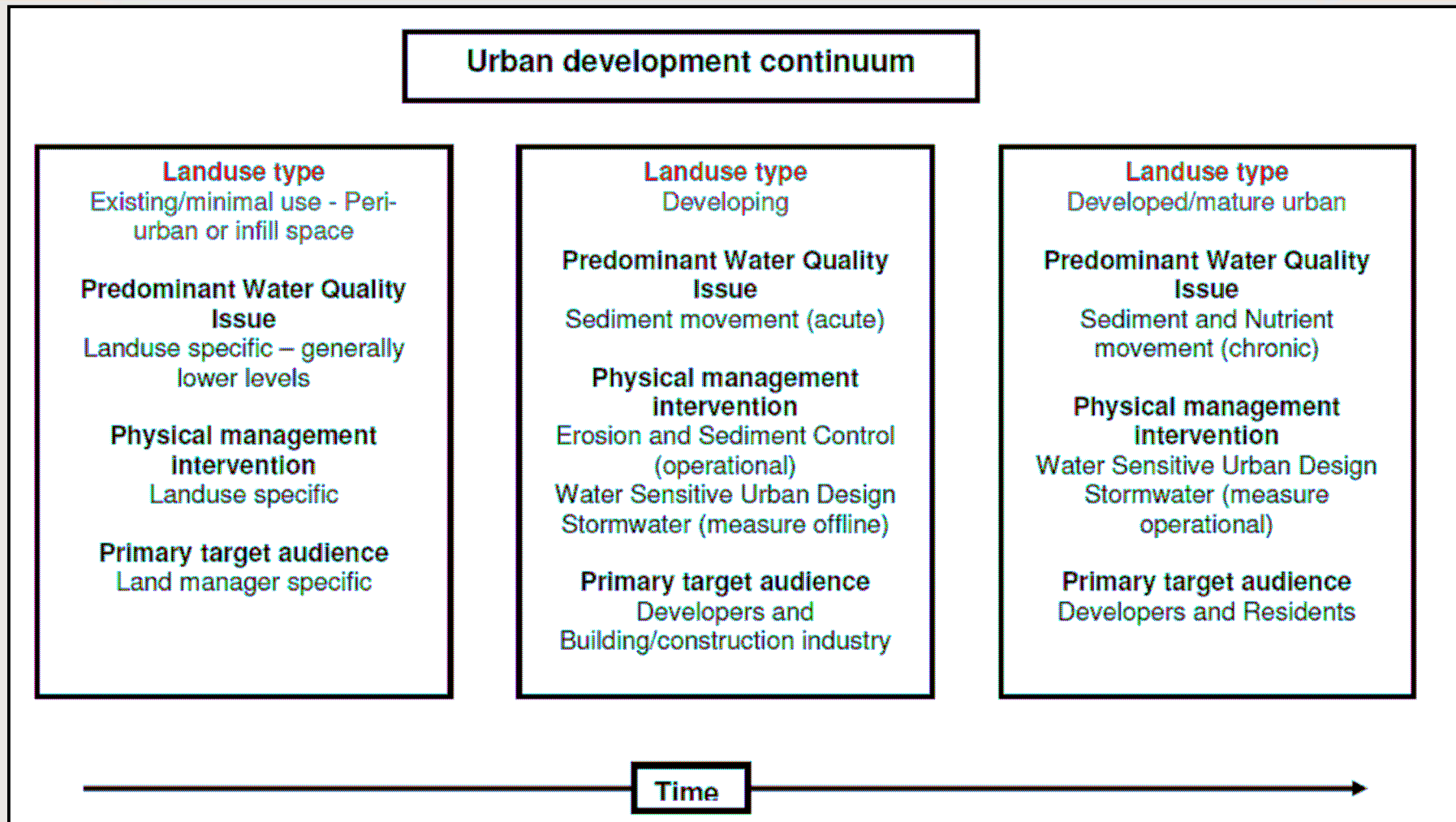


### More people equals:

- *more houses/development pressure = more pollutant loads*
- *more wastewater volumes = more pollutant loads*

# Priority management actions

## *Urban development context*






# Priority management actions

## *Developing urban areas*

- » Erosion and sediment control (operational)
  - 6 day E&SC course; Works code – E&SC Plan
- » Water sensitive urban design (planned but non operational)
  - Draft Dry Tropics WSUD Technical Design Guidelines
- » Influencing behaviours
  - Developers, construction industry, civil works etc
- » Site Based Stormwater management plans
- » Enhanced development assessment and conditions
- » Enabling actions
  - planning scheme and policies (stormwater, lakes etc),
  - awareness and training

# Priority management actions

## *Developed urban areas*

- 
- » Urban stormwater quality management planning
    - Complete USQMP for ‘urban growth zone’ of the amalgamated TCC local government area
  - » Water Sensitive Urban Design (operational) including retrofits
    - Draft Dry Tropics WSUD Technical Design Guidelines
  - » Social learning and influencing behaviours
    - Residents and land managers inc Council operations
  - » Enabling actions - Community based education and involvement

# Priority management actions

## *Peri-urban areas*

- Natural asset condition assessment and prioritisation (for WQ and biodiversity)
- Landscape mapping and planning and integration with regional planning processes
- Integration of natural asset prioritisation with the 'new' Planning Scheme
- Improved management practice by influencing behaviours (CBEI, CBSM, TC, CSL....)

# Priority management actions

## *Influencing behaviours*

***Fostering community wide behavior change***

**... Thematic Communication, CBSM and CSL**



» **Promote desired behaviours & management actions:**

- Cigarette butts
- Erosion and Sediment control on developing sites


# Implementation considerations

---

- >> Affordable and cost effective (over life cycle)
- >> Practical and effective (over life cycle)
- >> Involving, integrating and collaborative
- >> Transferable and replicable
- >> Supported
- >> Maintainable

Simple, effective and practical ON-GROUND ACTIONS

... integrating technology, ecology and people via transformative communications



# What about uncertainty and complexity?

---

- Population growth rate
- Climate change and variability
- WSUD efficacy in the Dry Tropics
- Peri-urban 'Best Practice'
- Community expectations
- Behaviour 'drivers' – various audiences
- Government policy and political will
- Funding and budget allocation uncertainty



# Thanks for listening...

More info: [www.creektocoral.org](http://www.creektocoral.org)

Email: [chris.manning@townsville.qld.gov.au](mailto:chris.manning@townsville.qld.gov.au)

Phone: 4727 9227 or 0424 750460

